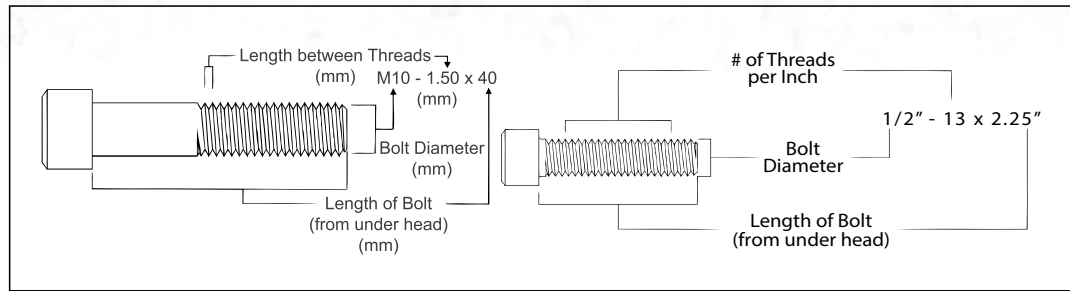


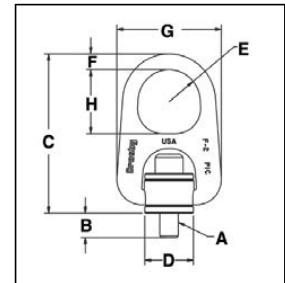
# Heavy Lift Swivel Hoist Rings



**HR-1000CT**



- All load bearing components are heat treated, Quenched & Tempered alloy steel.
- All components, with the exception of the retaining ring, are produced with maximum material hardness of 34 HRc. All primary load bearing components have Charpy impact testing. The body, bushing, washer and bail meet impact requirements of 31 ft-lbs min. avg. at -4°F. The bolt meets impact requirements of 20 ft-lbs min. avg. at -150°F.
- Individually Mag inspected with certification.
- Forged bail provides the following:
  - Easily readable raised lettering showing the name Crosby or "CG" and PIC Code for material traceability.
  - Greater durability providing the increased "Toughness" desired in potentially abusive field conditions.
  - Larger opening than standard Hoist Ring bail.
- Top washer is color coded for easy identification (blue for UN threads and grey for Metric threads).
- The Working Load Limit and Recommended Torque value are permanently stamped into each washer.
- Individually Proof Tested to 2 times Working Load Limit (90° and in-line).
- **BOLT SIZE IDENTIFICATION:** The size of the bolt will be stated as in the drawing above. Illustration shows meaning of each dimension given.
- **NOTE:** For Special Applications, see page 457.
- Frame 2 and larger are **RFID EQUIPPED**.
- Individually serialized.
- 100% MPI all primary load bearing components.
- Coating: Thermo-diffusion galvanized.
- Optional bolt sizes available upon request.



**Fatigue Rated**



**Load Rated**

**SEE APPLICATION AND WARNING INFORMATION**  
On Pages 210-211  
Para Español: [www.thecrosbygroup.com](http://www.thecrosbygroup.com)

## HR-1000CT UN Threads

Frame Size No.	HR-1000CT Stock No.	Working Load Limit (kg)*	Torque (Nm)	Dimensions (mm)								Mass Each (kg)
				Bolt Size A ‡	Eff. Thread Projection Length B	C	D	Radius E	Diameter F	G	H	
2	6608103	862	38	1/2 - 13 x 2.25	17.8	161	49.8	31.8	19.1	107	63.5	1
2	6608112	862	38	1/2 - 13 x 2.75	30.5	161	49.8	31.8	19.1	107	63.5	1
2	6608121	1361	81	5/8 - 11 x 2.25	17.8	161	49.8	31.8	19.1	107	63.5	1
3	6608130	2177	136	3/4 - 10 x 3.00	21.6	218	75.2	41.4	25.4	159	82.6	5
3	6608139	2812	217	7/8 - 9 x 3.00	21.6	218	75.2	41.4	25.4	159	82.6	5
3	6608148	3765	312	1 - 8 x 3.50	34.3	218	75.2	41.4	25.4	159	82.6	5
4	6608149	5670	637	1-1/4 - 7 x 5.00	53.3	287	94.2	50.8	36.6	207	102	11
4	6607669	9072	1085	1-1/2 - 6 x 5.50	66.0	287	94.2	50.8	36.6	207	102	12
4	6607727	9072	1085	1-1/2 - 8 x 5.50	66.0	287	94.2	50.8	36.6	207	102	12
5	6607670	12701	1491	2 - 4.5 x 7.50	81.3	385	102	68.3	44.5	296	127	31
6	6607671	20412	2847	2 1/2 - 4 x 9.50	94.7	506	146	76.2	69.9	368	143	71

\*Ultimate Load is 5 times the Working Load Limit. ‡ Bolt specification is an Alloy socket head cap screw to ASTM A320 Grade L7 or L43.  
NOTE: The tightening torque values shown are based upon threads being clean, dry and free of lubrication.